

Connecting to the Ridgewood Library Wireless Network with Windows XP and Internet Explorer browser.

1. Once your computer is started, you should see two little computers in the system tray near the clock (bottom right corner). Move your mouse over each of these, to see what they represent. One should represent your wireless connection. Right-click over the wireless connection icon. You will then see a menu. Left-click on "view available wireless connections".



2. You will see a window that will display available networks. Choose *Ridgewood Library Wireless*. You will be given a warning that the network is not secure. If you choose to connect, check the box to "allow" and click on "connect". That should allow you to connect wirelessly.

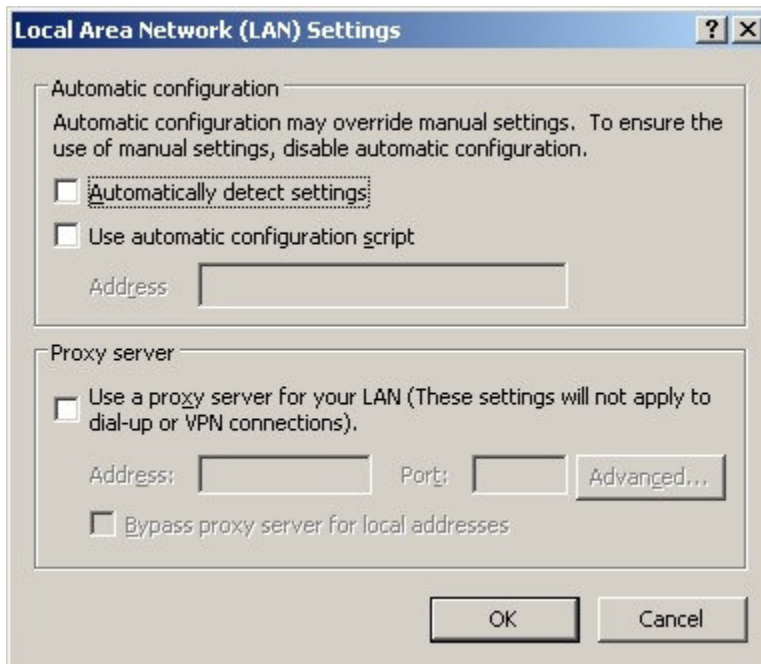


3. Once you are connected, you should see a little status message pop up to verify that you are connected to the network. This should also tell you the strength of the wireless signal that you

are receiving.



4. Open Internet Explorer to see if you get a connection. If you cannot connect, there might be a setting in internet explorer that needs to be changed. You can open Internet explorer. Click on **Tools**, then on **Internet Options**. Click on the **Connections** tab. Next click on the **LAN Settings** button.



5. Make sure that the Proxy server option is unchecked. Click on "automatically detect settings" if it is not checked. Click on OK. Make sure that you close and re-open Internet Explorer to be sure that the changes are set.